

Application note No. 3015. Rev. 1.2

NucleoCounter® NC-3000™**Counting of Aggregated Mammalian Cells using the Via1-Cassette™****Product description**

The NucleoCounter® NC-3000™ system enables the user to perform automated cell counting of a broad range of mammalian cells.

Application

The Via1-Cassette™ and **Solution 10** used together with the NucleoCounter® NC-3000™ can be used for determination of the cell concentration of aggregating cell lines. Treatment of cells with **Solution 10** facilitates disaggregation of cell aggregates resulting in single cell suspensions.

Introduction

In order to determine the cell concentration, a sample containing cells in suspension is diluted with **Solution 10** (lysis buffer) and drawn into the Via1-Cassette™. The inside of the Via1-Cassette™ is coated with a dye, DAPI which after lysis with **Solution 10** stains all cell nuclei in the sample. The volume of each Via1-Cassette™ has been calibrated to give a high precision of the resulting count.

The Via1-Cassette™ is placed in the NucleoCounter® NC-3000™ where cell concentration is determined.

Procedures

If the cell line to be investigated is adherent or semi-adherent, then start by getting all cells into suspension using the preferred method of your laboratory (e.g. trypsin/EDTA treatment).

Materials needed

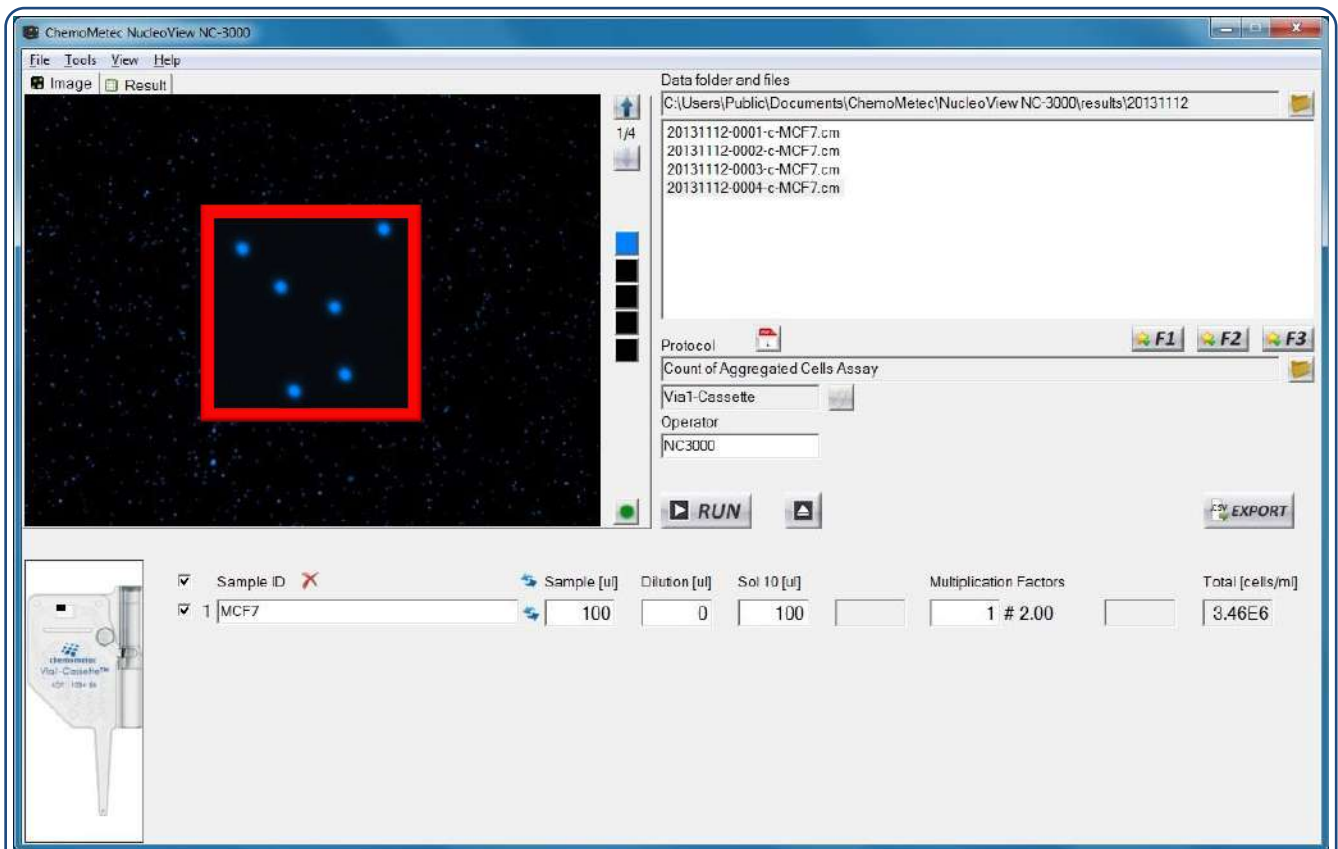
- Cells to be counted
 - **Solution 10**
 - Via1-Cassette™
1. The cell suspension is mixed to obtain a homogenous suspension and is mixed 1:1 with **Solution 10**. E.g., to a volume of the cell suspension of 100 µl add 100 µl **Solution 10**. Mix by pipetting. Draw a cell sample by inserting the tip of the Via1-Cassette™ into the cell suspension and pressing the piston.
 2. Immediately place the loaded Via1-Cassette™ on the tray of the NucleoCounter® NC-3000™, select the “**Count of Aggregated Cells Assay**” and sample unit **Via1-Cassette** and press RUN.

After approximately 1 minute the cell concentration (cells/ml) is displayed in the result tab. The displayed cell concentration has been compensated for the two time dilution caused by **Solution 10**. If the cell sample has been further diluted or concentrated and the user has entered the volumes into the user interface the dilution factor has also been taken into account and the returned cell concentration is for the original cell concentration.

Note

To assure reliable results, it is recommended that the cell concentration of the counted cell suspension should be in the range of $5 \cdot 10^4$ cells/ml to $5 \cdot 10^6$ cells/ml. If the cell concentration is above $5 \cdot 10^6$ cells/ml, the cell suspension can be diluted with growth media or PBS to achieve the desired concentration. The diluted cell sample is then treated as described above. By inserting the value for the dilution volume in the dilution field on the user interface the returned cell concentration is for the original cell sample.

If the concentration of cells is below $5 \cdot 10^4$ cells/ml then the cell concentration may be increased by centrifugation followed by resuspension of the pellet using growth media or PBS. The resuspended cell sample is then treated as described in the procedure. By inserting a negative value representing the volume removed from the sample in the dilution field on the user interface the returned cell concentration is for the original cell sample.



Determination of cell concentration of aggregated MCF7 cells. The cells were disaggregated by adding **Solution 10** and loaded into a Via1-Cassette™ and analyzed using the Count of Aggregated Cells Assay. The total cell population is stained with DAPI and appears blue. An insert shows a close up of a part of the image.

Trouble shooting

Inaccurate and imprecise counting:

When setting up a new cell line it is important to inspect that the cell line is counted correctly. The cells included in the total count can be marked by clicking on the overlay button in the bottom right corner of the image. Visual inspect the image to evaluate in the vast majority of the cells has been counted correctly. If this is not the case right click on the image file in question and choose "Show Raw Data". Inspect the gates displayed in the Plot Manager. If the gating is inappropriate right click on the image file in question again and choose "Start Protocol Adaptation Wizard". Adapt the gate(s) to cover the cell population (do not include debris and very large objects) and save the changes to a new protocol. Note that the user is responsible for defining appropriate gating of the particular cell line.

Inappropriate loading of the NC-Slides:

Due to variations in chamber volumes the exact amount needed to fill the chamber may vary. Make sure that the chamber is completely filled and that no excess liquid spreads into other chambers or onto the top of the cover slip. Furthermore, avoid introduction of air bubbles into the chambers. Insufficient filling and air bubbles may cause cell movement compromising the quality of the image analysis.

Handling and storage

For handling and storage of ChemoMetec instruments and reagents, cassettes and NC-Slides refer to the corresponding product documentation. For other reagents refer to the material data sheet from the manufacturer of the reagents and chemicals.

Warnings and precautions

For safe handling and disposal of the ChemoMetec reagents, cassettes and NC-slides refer to the corresponding product documentation and the NucleoCounter® NC-3000™ user's guide. For other reagents refer to the safety data sheet from the manufacturer of the reagents and chemicals required for this protocol. Wear suitable eye protection and protective clothes and gloves when handling biologically active materials.

Limitations

The NucleoCounter® NC-3000™ system is FOR RESEARCH USE ONLY. NOT FOR DIAGNOSTIC OR THERAPEUTIC USE. The results presented by the NucleoCounter® NC-3000™ system depend on correct use of the reagents, NC-slide and the NucleoCounter® NC-3000™ instrument and might depend on the type of cells being analyzed. Refer to the NucleoCounter® NC-3000™ user's guide for instructions and limitations.

Liability disclaimer

This application note is for RESEARCH PURPOSES ONLY. It is not intended for food, drug, household, or cosmetic use. Its use must be supervised by a technically qualified individual experienced in handling potentially hazardous chemicals. The above information is correct to the best of our knowledge. Users should make independent decisions regarding completeness of the information based on all sources available. ChemoMetec A/S shall not be held liable for any damage resulting from handling or contact with the above product.

Product disclaimer

ChemoMetec A/S reserves the right to introduce changes in the product to incorporate new technology. This application note is subject to change without notice.

Copyright

Copyright © ChemoMetec A/S 2003. All rights reserved. No part of this publication may be reproduced, stored in a retrieval system, or transmitted in any form or by any means, electronic, mechanical, photocopying, recording or otherwise, without the prior written consent of ChemoMetec A/S, Gydevang 43, DK-3450 Allerød, Denmark.